



WorldCast MANAGER



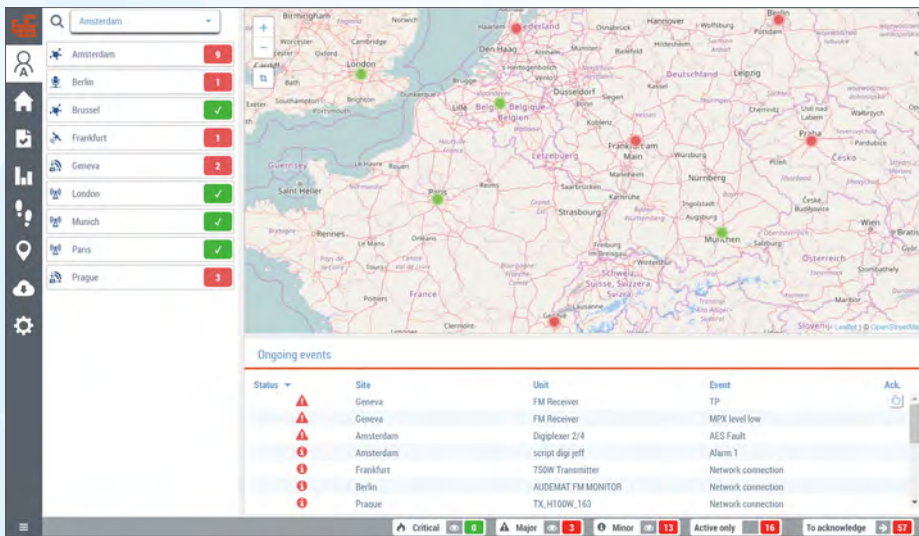
Monitor & Manage
ALL your Devices on **ALL** your Sites
with our unified NMS software

- **Centralized Web Interface**
- **Vendor-agnostic Monitoring**
- **Auto-discovery & Network Scanning**
- **Dynamic Maps & Displays**
- **Real-time Monitoring & History Tracking**
- **Alarm & Notification Management**
- **Mobile Ready**
- **Visual Dashboard & Analytics**

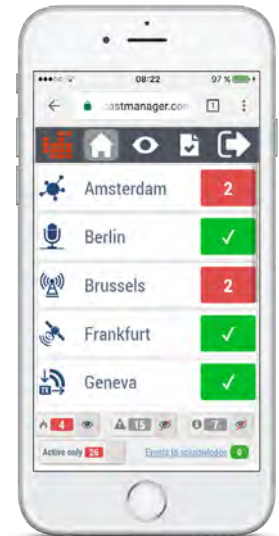










Find out more

Key Features



WorldCast Manager - Dashboard



-  **Centralized Web Interface**
View status of your entire operation in one powerful display
-  **Real-time Monitoring & History Tracking**
Access to Real-time and historical readings and events
-  **Vendor-agnostic Monitoring**
*Support ANY device from ANY manufacturer via SNMP, XML-RPC, GPIO *, Serial * (* Additional equipment required)*
-  **Alarm & Notification Management**
Filter and send notifications by Email, SMS, voice call. In app acknowledgement and tracking
-  **Auto-discovery & Network Scanning**
-  **Cross-platform & Mobile Ready**
Web client natively compatible with smartphone devices and mobile browsers
-  **Dynamic Maps & Displays**
Geographic, floor plan, flow charts
-  **Analytics & Reporting Engine**
Data visualization with advanced filtering to enable decision-making at all levels

Welcome to a new era of network monitoring & management

The WorldCast Manager is a unique software solution centralizing and unifying the monitoring and management of all connected devices across one or multiple sites.

Leveraging its powerful auto-discovery feature and self-configuration engine coupled with a large library of built-in drivers, the WorldCast Manager is the fastest network monitoring solution to deploy.

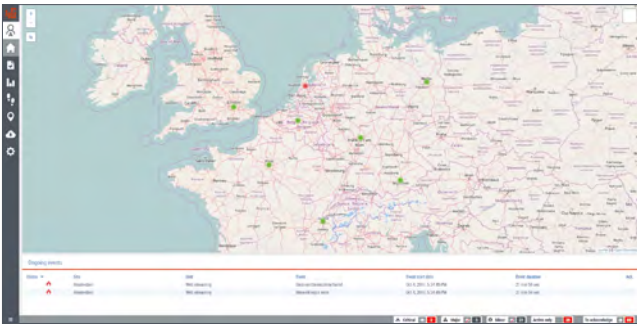
Within minutes of installation, the WorldCast Manager starts monitoring all your devices.

The WorldCast Manager has been designed with scalability in mind - enabling easy deployment regardless of the size and complexity of your network or needs.

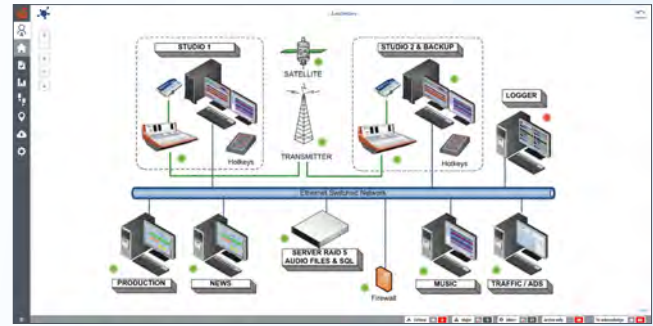
The standard edition is well suited for most stations and simple multi-site deployments - whereas the enterprise edition is specifically tailored for large deployments across a great number of sites or a global network.

Simple to Operate

VISUALIZE THE STATUS OF EACH SITE AND DEVICE VIA THE DYNAMIC MAP & DIAGRAM



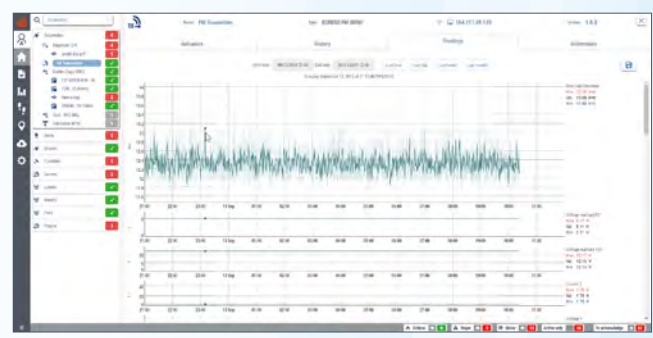
High-level dashboard indicating the status of each site



Diving into a site to explore the status of its equipment

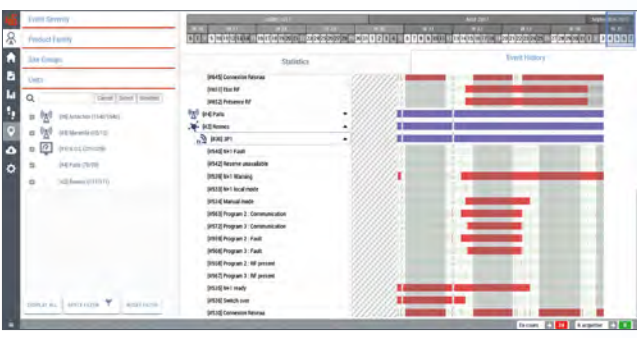
EXPLORE THE REAL-TIME AND HISTORICAL DATA OF ALL EQUIPMENT

Equipment's key metrics and configuration web-page access



Full details of any alarm or reading

ACCESS DETAILED VISUAL ANALYTICS WITH A POWERFUL REPORTING ENGINE



Track the origin of your events via the Unified Timeline



Build, save & share insightful reports

EXPLORE INBUILT DRIVER LIBRARY

Explore the inbuilt driver library

Open Driver Policy

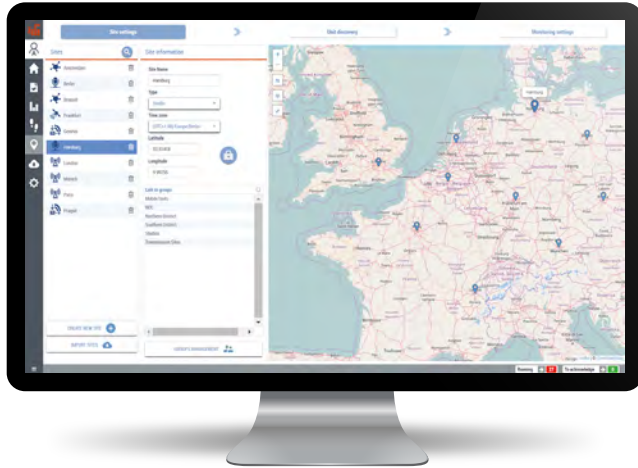


Can't find the driver you need **in our existing library?** Send us your MIB files and let us build the driver for you!

The driver creation service is complimentary with any valid support contract!

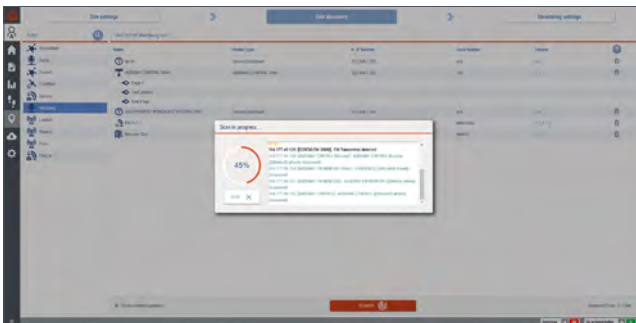


Find out more



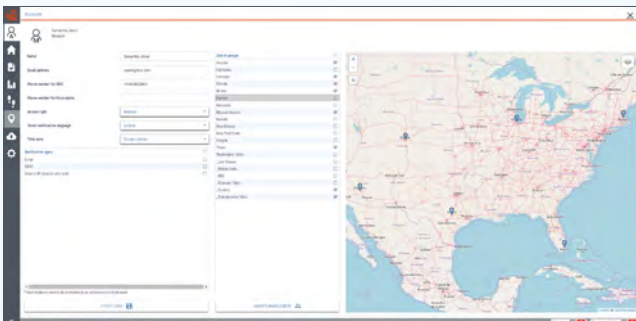
Locate and identify your sites

LOCATE SITES AND DISCOVER SNMP DEVICES



Discover all devices on your network

MANAGE THE USER RIGHTS & ASSIGNMENTS



Defining user permissions and group assignments

HEAD OFFICE

WorldCast Systems S.A.S.
20, av Neil Armstrong
33700 Mérignac (Bordeaux-Métropole) FRANCE
+33 557 928 928
contact@worldcastsystems.com

Simple to Administrate

Order information

Two editions available

Standard Edition: Up to 10 / 25 / 50 / 100 / 250 / 500 / 1000 monitored devices across up to 50 sites. Optional add-ons are available to enable additional functionality.

Enterprise Edition: Designed for large and complex deployments, it supports an unlimited number of monitored devices and unlimited number of sites.

The Enterprise Edition is supplied by default with all available add-ons for an optimum experience.

Licensing

Perpetual License: One-off license purchase with annual recurring support fee.

Annual Subscription: Yearly subscription fee covering the license rental and support - 3 year minimum commitment.

If required, additional professional services can be purchased to assist with the installation and configuration of the platform as well as training.

Support

Two levels of support contract are available:

Standard support with hotline during office hours

Premium support with a 24/7 hotline

Both support levels provide access to online resources (documentation, wiki, CRM portal) and software updates. A 3 year support contract is included with all proposals. An upfront 5 year commitment will unlock additional discounts.

What about devices without SNMP?

SNMP-enabled devices can be seamlessly integrated into the WorldCast Manager Software but what about devices without SNMP compatibility?

The AUDEMAT CONTROL Silver, a member of our remote control family of products, can act as a local hub to interface with one or several legacy products within the network. It enables connections based on more traditional methods such as digital, analog or audio inputs, relays and serial protocols.



Audemat Control Silver

WorldCast Systems Inc

19595 NE 10th Avenue Suite A
Miami
FL 33179 USA
+1 305 249 3110
ussales@worldcastsystems.com