

English

AUDEMAT CONTROL SILVER Quick Start Notice

1. Unpacking

Check that all elements are present in the box:

- 1 RJ45 cable
- 1 12 VDC / 1.5 A power supply (optional)
- 1 connector for external power supply
- 1 folder including Audemat Control Silver CD and a quick start notice. On the CD you will find the ScriptEasy and MasterView applications, the product documentation and sample scripts



2. Connection

1. Connect the unit to the power using the Audemat power supply or your own.
With Audemat's optional power supply, simply connect the power supply to the "Mains" connectors (top panel of the Audemat Control Silver, see diagrams on the back of this notice).

If using a different power source, use the supplied connector if needed

! Use a 12 to 24 VDC power supply and make sure to comply with the electric circuit polarity when connecting.

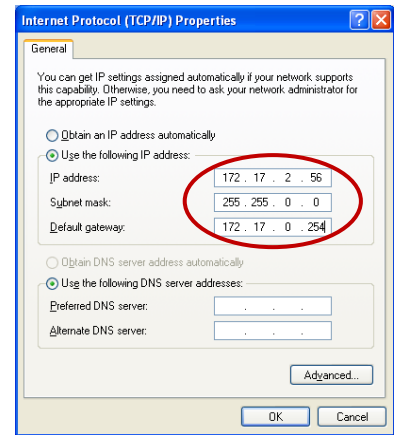


2. Connect the Ethernet cable from the unit's network interface to your PC, or to a router or a switch.

3. In case you are using a direct connection, you will need to set an address on the PC in the 172.17.2.xx range, so it is compatible with the IP address in the Audemat Control Silver.

➤ For this, if using Windows 2000 or Windows XP, go to:

- Control panel/Network connections/
- Local Area Connection / Properties
- Click on Internet Protocol (TCP/IP) in the scroll-down menu then on “Properties”.
- Add the IP address and the sub-network mask (for example 172.17.2.56 / Netmask 255.255.255.0)



➤ With Windows Vista or 7, go to:

- Control panel / Network and Internet / Network and Sharing Center.
- Click on “View Status” for your local area connection, and on Properties
- Click on Internet Protocol 4 then on Properties.
- Add the IP address and the sub-net mask (for example 172.17.2.56 / Netmask 255.255.255.0)

3. Installing the applications

Install the Audemat Control Silver applications from the supplied CD-rom:



- **ScriptEasy:** to configure your Audemat Control Silver and create scripts and custom views.
- **MasterView:** to visualize the status of the Inputs/Outputs using the views created with ScriptEasy.

* MasterView is available as a web application and as a PC application. The MasterView installer on this page is for the PC application. For the web application, nothing needs to be installed. MasterView is an option, without the license, functions are limited.

! Do not install ScriptEasy or MasterView if more recent versions are already installed on your PC and remove older versions if needed ('Start' menu, Programs/Audemat/ScriptEasy/Uninstall and Programs/Audemat/MasterView/Uninstall).

Simply click on both links and follow on-screen instructions.

The applications will be accessible using desktop icons or going to the 'Start' button and 'Programs' → 'WorldCast Systems' → 'ScriptEasy' → 'ScriptEasy' or 'Programs' → 'WorldCast Systems' → 'MasterView' → 'MasterView'

4. Network configuration

You may now access network configuration. Either use the 'System Settings' page of the embedded web site, or use the 'Equipment' button in the ScriptEasy application, 'Network' page.

With the web site:

i *Though the web application is compatible with most browsers, performances vary from one browser to another. Below is a list of compatible browsers from the most performing to the less performing by operating system:*

- Windows XP: Google Chrome / Mozilla Firefox
- Windows Vista: Google Chrome / Mozilla Firefox
- Windows 7: Google Chrome / Mozilla Firefox / Microsoft Internet Explorer 11
- Windows 8: Google Chrome / Mozilla Firefox / Microsoft Internet Explorer 11
- Mac (OSX 10.9): Google Chrome / Mozilla Firefox / Safari
- Linux (2013): Google Chrome / Mozilla Firefox
- iPad / iPhone (IOS 6.X, 7.0x): Apple Safari / Google Chrome
- Android phone (4.4): Google Chrome / Mozilla Firefox

i *Connecting to the embedded web site can be done in http (standard mode) or https (secured mode). With https, some browsers may display a message indicating that the connection is not certified. WorldCast Systems cannot indeed certify your unit's address; however, the connection is secured (data is encrypted) and you may proceed to access it. Other browsers may block access to the site; you may then use an http connection.*

Open a Web Browser and enter the IP address **172.17.2.172** starting with the chosen protocol in the address bar:

http://172.17.2.172 or https://172.17.2.172.

The default login and password are "**Admin**" and "**admin**"



You will then access the embedded website of the unit.

Click on 'System Settings' to display the network page.

Static Ethernet Configuration	
Primary Interface	
IP Address	192.168.1.236
Netmask	255.255.0.0
Default Gateway	192.168.0.254

You will need the IP address every time you'll want to connect to the Audemat Control Silver using the ScriptEasy or MasterView applications.

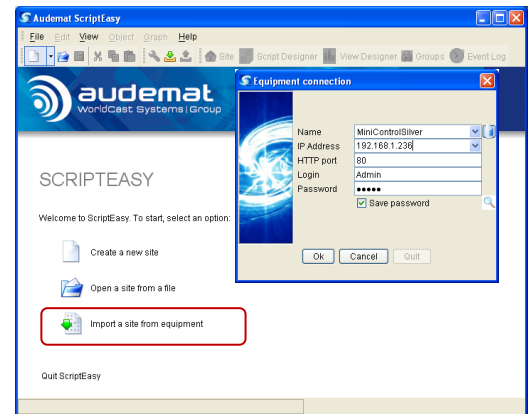
i *Passwords can be modified on the User page of the ScriptEasy system configuration section.*

=> Please refer to the Audemat Control Silver user manual for further information on configuration.

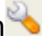
5. Using the ScriptEasy script

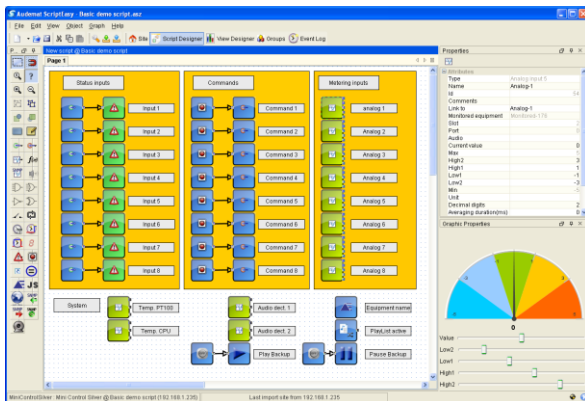
The Audemat Control Silver is supplied with a basic script. To use this script:

1. Start ScriptEasy.
2. Click 'Import a site from equipment' to connect to your Audemat Control Silver.
3. Enter the IP address (as set on the Network page of the embedded web site), login and password of the Audemat Control Silver (default values: "Admin"/"admin") and click 'OK'.



i If a Windows Firewall is activated, add the application to the list of approved applications

4. If necessary, click the button  to display system configuration pages for your Audemat Control Silver.
5. The default script makes it possible to manage the Audemat Control Silver inputs/outputs, including manual control of the audio backup.



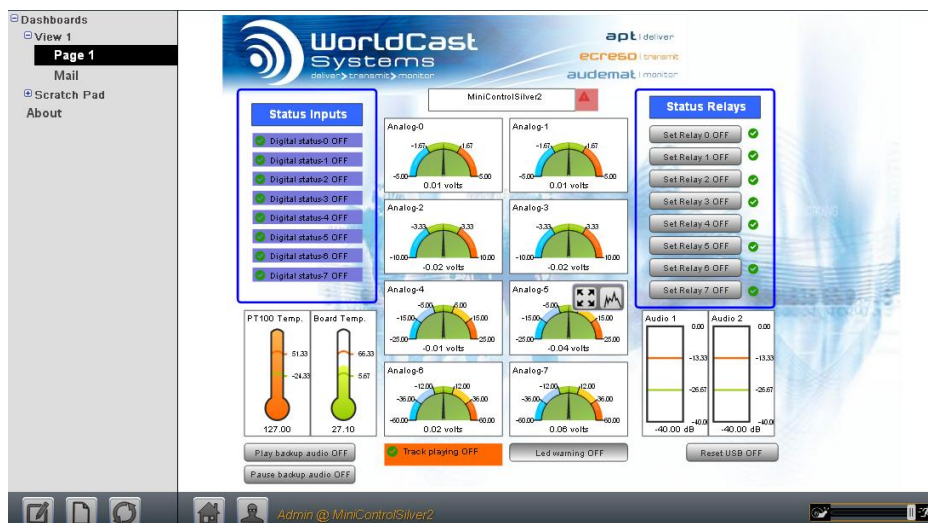
i Sample scripts are provided on the Audemat Control Silver CD. These scripts may be used as is or they can be customized. You may also create a full script from scratch.

i If your site requires a script including more than 50 action buttons or more than 50 alarms, we recommend our more powerful solutions: IP2CHOICE or RELIO.

=> Please refer to the ScriptEasy user manual for further information on site configuration and scripting.

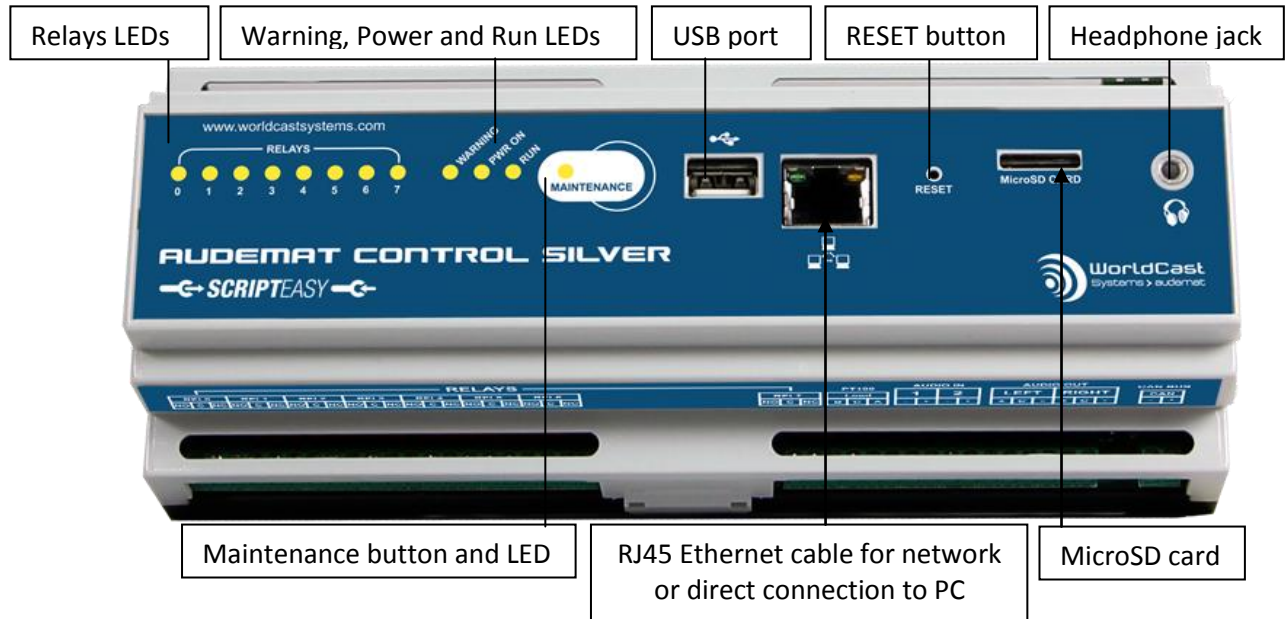
6. MasterView (option)

1. Open a web browser and enter the unit IP address, login and password.
2. Click the MasterView button.
3. Select the view in the 'Dashboards' list. You may now visualize the status of inputs and outputs in real time and remotely.



=> For more details about MasterView please read the ScriptEasy manual

7. AUDEMAT CONTROL SILVER connectors and LEDs



Top panel connectors



Bottom panel connectors



For technical questions, please contact:

support@worldcastsystems.com or ussupport@worldcastsystems.com

WorldCast Systems is certified ISO 9001 and our quality department welcomes your feedback. For any question, do not hesitate to contact directly our quality manager: quality@worldcastsystems.com

