



QoS Monitoring Facility Management



POWERFUL PERFORMANCE

- High RF Measurements Accuracy
- Full ETR290 MPEG-TS Analysis and Monitoring
- QoE: Analysis of Image Quality



POWERFUL CONTROL

- Complete Range of Diagnostic Tools
- Customizable Alarms and Notifications
- Advanced Telemetry and Facility Control



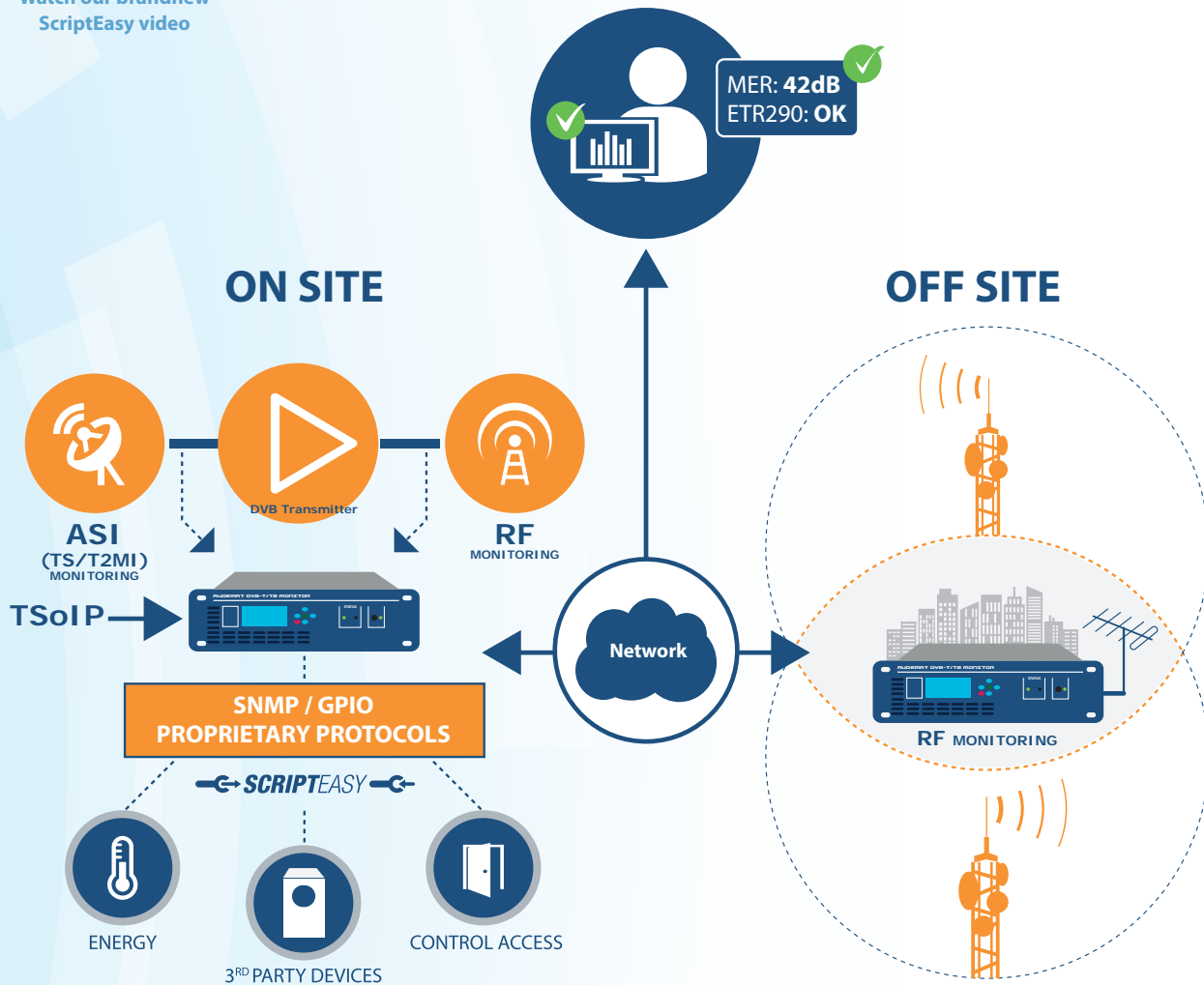
POWERFUL SAVINGS

- 24/7 Data Tracking & Access
- Reduced Downtime and Engineering Visits
- History, Trends for Protection of Network Investment
- Monitoring, Analysis and Telemetry in a Single Unit



Watch our brandnew
ScriptEasy video

SUPERVISION CENTER



- 📶 T2MI/TS Monitoring from ASI signal or IP inputs
- 📶 RF Monitoring
- 📶 MPEG Transport Stream Monitoring from RF signal
- 📶 Advanced Telemetry and Facility Management with ScriptEasy
- 📶 Video / TS Analyser, Recorder and Streaming

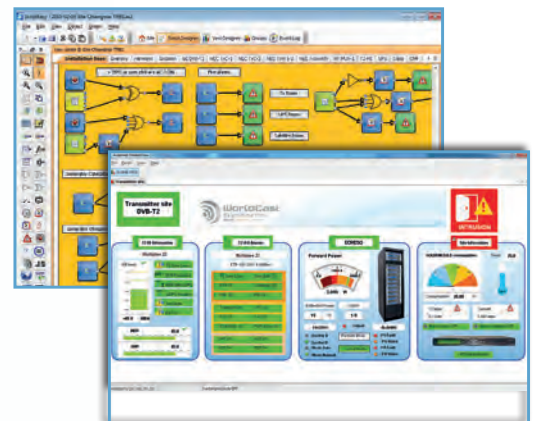
- 📶 SFN Monitoring
- 📶 RF Monitoring from Antenna
- 📶 MPEG Transport Stream Monitoring from RF Signal
- 📶 RF Scanning Monitoring for Variations / Intrusions
- 📶 Video / TS Analyser, Recorder and Streaming



Advanced Telemetry and Facility Management with ScriptEasy

ScriptEasy is the revolutionary facility control software developed by WorldCast Systems to give the users the power and flexibility to create “Smart” sites; ones that can automatically take action to correct any critical errors that affect operations. Featuring an intuitive Graphic User Interface (GUI), ScriptEasy incorporates GPIO functions, serial communications, logic operators, live user inputs, timers and more. This allows the site operations to be “scripted”, to allow evaluation of multiple parameters and even automatically engage backup systems, while simultaneously alerting relevant technical personnel.

The innovative interface, consisting of the ScriptEasy Designer and the MasterView modules, supports easy development and allows real time status display and management.

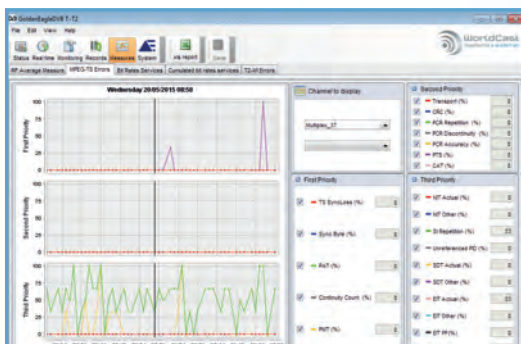


MasterView-Remote Customised view(s)

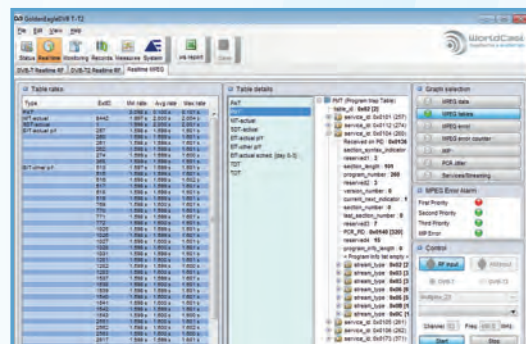
Key Features

FEATURES

- T2 stream inputs: RF, ASI or IP
- Track real-time status of your signal 24/7/365
- Automatic band scanning to detect any RF intrusions or variations
- Real-time remote measurement and analysis of any station
- At-a-glance status view provides overview of all monitored stations
- SFN Monitoring: Network delay, impulse response
- Recorded measurements and logs for export & trend analysis
- Real-time audio/video streaming to your desktop
- Alarm management and monitoring for all main parameters
- Frozen & Monochrome Image Analyzer



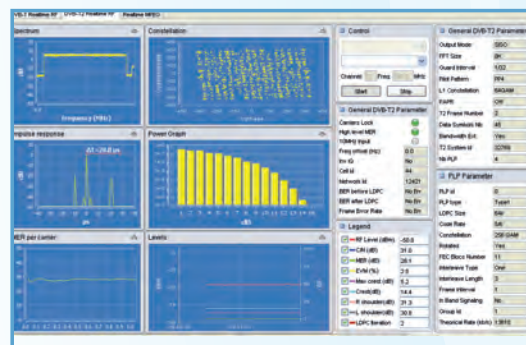
One Month History and XLS Export



Tables Analysis



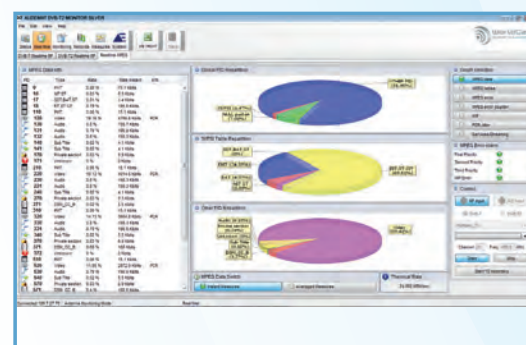
Status Page with Running Alarms



Real Time RF Measurements



Cumulated Bit Rates Services



Real Time MPEG Content

Technical Features

DVB-T2

- Standard
- Option

RF Characteristics	Options	
Up to 20 Monitored Channels (+MPLP)	●	
Probe Mode (MER up to 42dB)	●	
RF level, SNR level, MER level, BER, Shoulders ...	●	
Constellation, Power Graph	●	
T2 and PLP Parameters	●	
T2 - Lite	●	
SFN (Echoes Management)	○	CD000130
Spectrum Analyzer	○	CD000135
MPEG2-TS/T2MI		
ETR 101290	●	
MPEG Data Information and Repartition	●	
MPEG Error Counter, Jitter	●	
Video Streaming (3 modes) & Thumbnails Control Display	○	CD000131
Structure Content Analyzer (data, errors)	○	CD000129
SID Rates, PID Rates	○	CD000129
Frozen & Monochrome Image Analyzer	○	CD000129
T2MI Decoding and Analysis	○	CD000140
Logs		
TS and Video Recording	●	
Events Filtering and Export	●	
Measurement History	●	
Advanced functions		
Multiple User Accounts	●	
Remote Application	●	
Embedded Web Server	●	
SNMP Monitoring (MIB: Measurements, Alarms)	●	
Factory Reset / Save / Restore / Maintenance User	●	

Alarming		
SNMP (up to 4 IP addresses)	●	
Email (1 user or group)	●	
SMS (1 user or group)	○	TF01174 (GSM modem)
Remote Facility Control		
Advanced Scripting Capabilities	●	
Customized Remote View(s)	●	
SNMP Concentrator (10 Devices)	●	
SNMP Extension (10 Additional Devices)	○	CD00064
RS232 / RS485 Drivers	○	CD00039
Telemetry Boards (Status, Relays, Metering)	○	TF00249-A0
Hardware		
RF Input, ASI Input, IP input	●	
ASI Output	●	
10 MHz	●	
1 PPS	●	
Communication Ports: Serial port, USB, Ethernet	●	
Front Panel Indicators (LCD screen + Alarms + Buttons)	●	

Technical specification

ETSI Standard	ETSI EN 302 755 (1.3.1 supported)
Frequency Bands	50 MHz to 862 MHz
Return Loss	> 13 dB
Input Level	Channel: -75 to -30 dBm / Full band: -50 to -10 dBm
MER Level	Probe mode : up to 42dB
Network Mode	MFN / SFN
Frequency Tunable	Within VHF III and UHF IV-V-VI
Offset Selectable	Auto
ETR 101290	Yes
MISO / SISO	Yes
M-PLP	Yes
Channel Bandwidths	5, 6, 7 and 8 MHz
FFT Size	1k, 2k, 4k, 8k, e8k, 16k, e16k, 32k, e32k
Guard Interval	1/128, 1/32, 1/16, 19/256, 1/8, 19/128 and 1/4
Code Rate (FEC encoding)	1/2, 3/5, 2/3, 3/4, 4/5, 5/6 or 7/8
Modulation	QPSK, 16QAM, 64QAM, 256QAM, rotated constellation
Hierarchical Mode	Supported
Adjacent Rejection	Digital > 30 dB / NorDig figures for QEF / MHz channel

Physical specification

External Dimensions (W / L / H)	48 cm (19") x 32.5 cm (12"¾) x 2U
Weight	≈ 6,70 kg – 14.77 lbs
Main Power Supply	100-250 V / 50-60 Hz
Power Consumption	≈ 60 W @ 230 VAC
Optimal Performance Temperatures	+5°C - +45°C
Guaranteed Working Temperatures	0°C - +50°C
Storage Temperatures	-20°C - +70°C
Humidity	10-95% non-condensing relative humidity

Technical specification are subject to change without prior notice – 02/2018




Order information

Standard Version	
REF	DESCRIPTION
TF00360-A0	AUDEMAT DVB-T2 MONITOR
Software options	
CD00131	Picture Control
CD00130	SFN
CD00129	TS Structure
CD00140	T2-MI
CD00135	Spectrum Analyzer
On demand	TSolP monitoring/analysis
Hardware options	
TF00249-A0	Remote Control Package with GPIO cards
On demand	ScriptEasy Drivers and SNMP Extension Licenses
Compatible with any SNMP-based NMS (like Worldcast Manager)	

Head Office

 WorldCast Systems S.A.S
 20 avenue Neil Armstrong
 33700 Mérignac (Bordeaux Métropole) FRANCE
 +33 (0)5 57 928 928
 contact@worldcastsystems.com

WorldCast Systems Inc

 19595 NE 10th Avenue Suite A
 Miami, FL 33179 USA
 +1 305 249 3110
 ussales@worldcastsystems.com



See more about
DVB-T2 Monitor